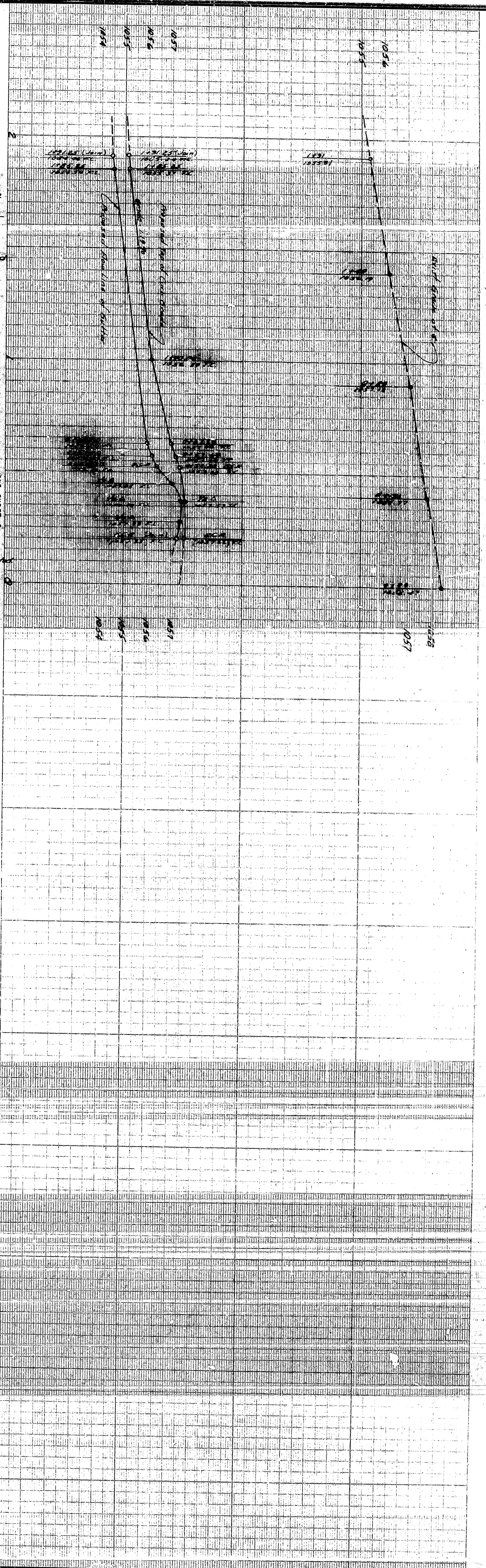
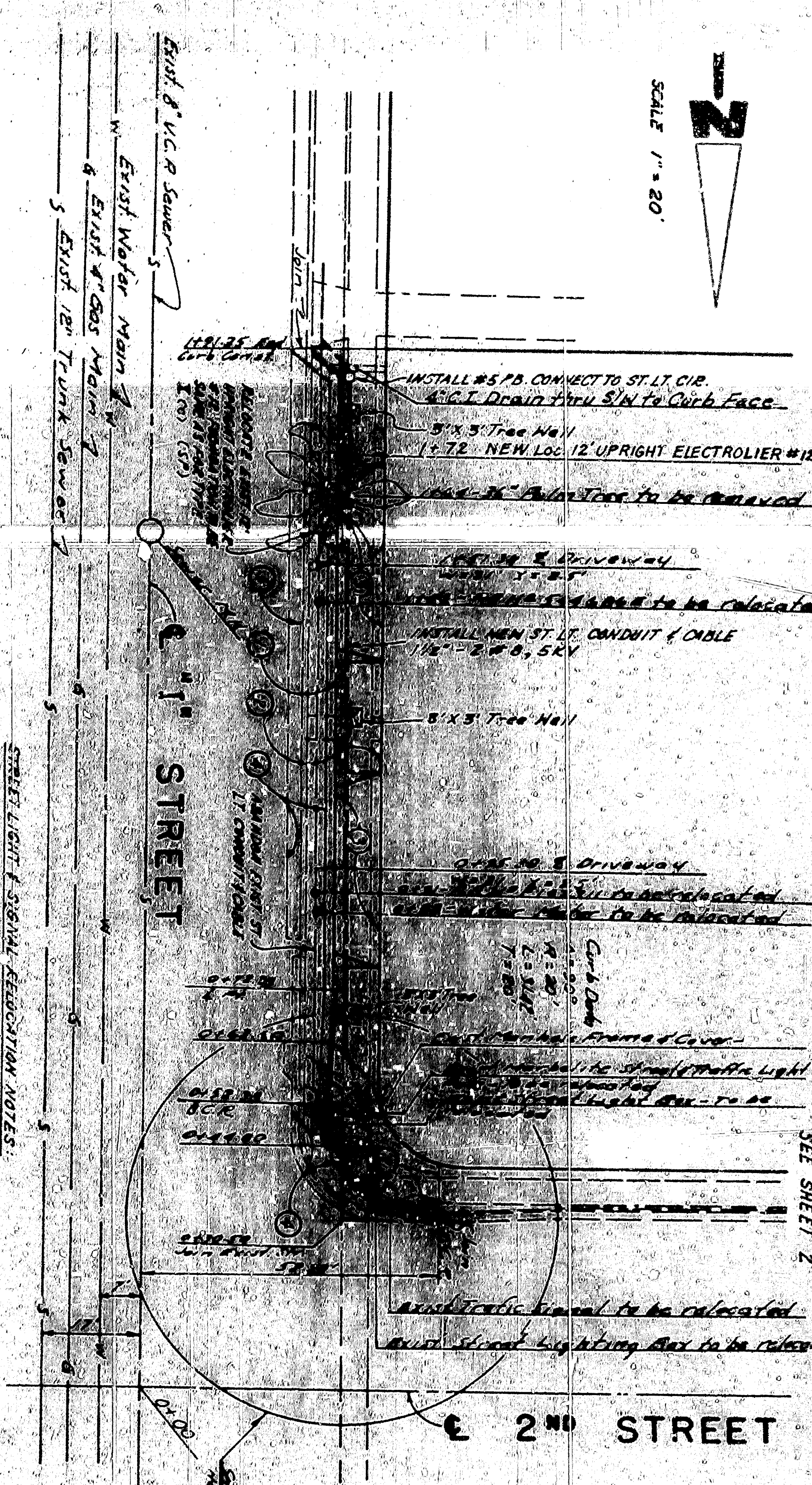


1967
 11/15/67
 11/15/67



SCALE 1" = 20'

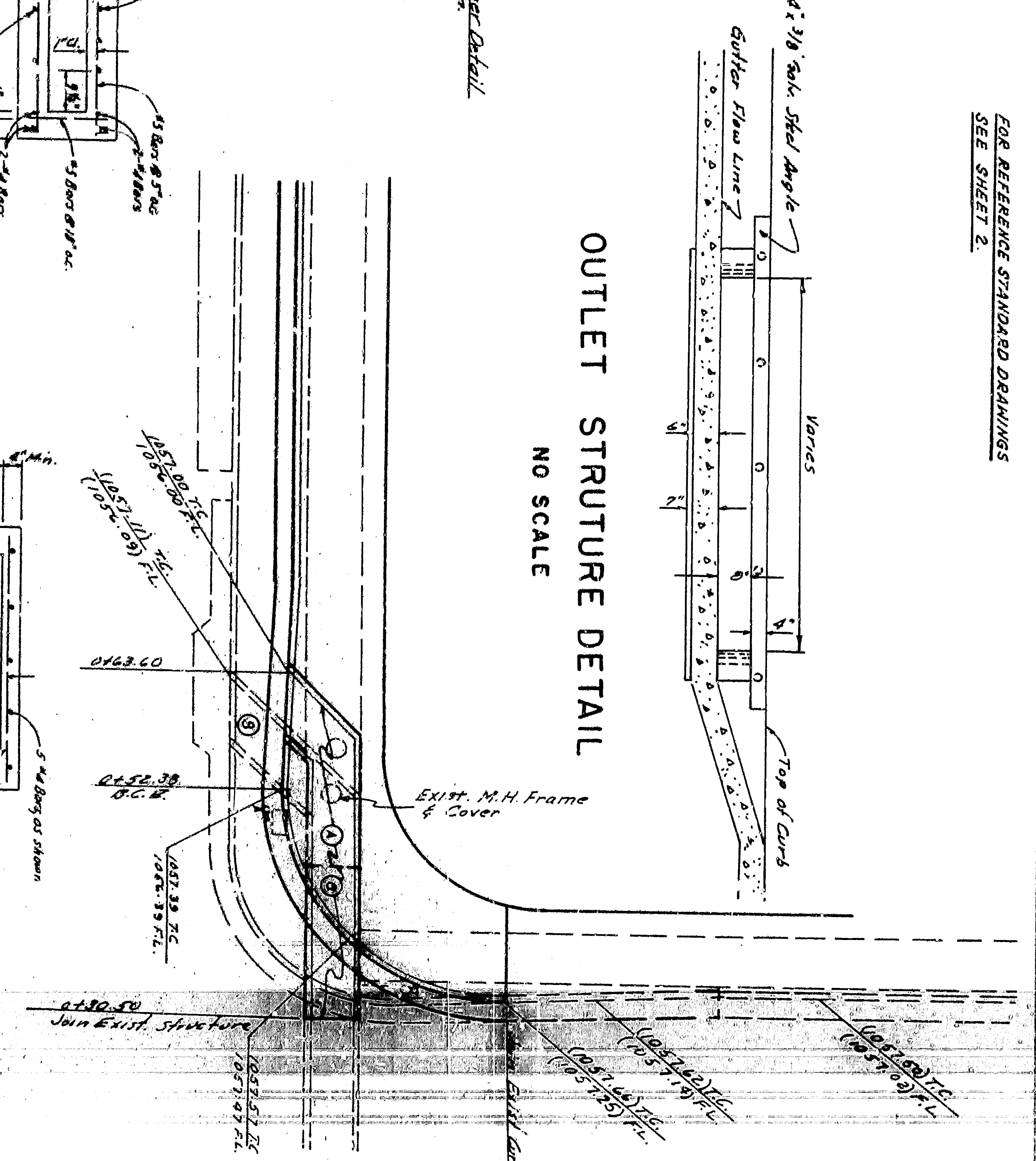


STREET LIGHT & SIGNAL DESCRIPTION NOTES:
 1. FOR ALL STREET LIGHTS AND SIGNALS, THE CITY OF SAN BERNARDINO DEPARTMENT OF PUBLIC WORKS SHALL BE IN ACCORDANCE WITH STANDARD SPECIFICATIONS OF THE STATE OF CALIFORNIA, DIVISION OF HIGHWAYS, DATED 06/01/66.

TYPICAL SECTION
 1st STREET
 NO SCALE

DETAIL B - IN STREET

DETAIL A - BEHIND CURB



OUTLET STRUCTURE DETAIL
 NO SCALE

CONSTRUCTION NOTES:

- 1. Careful location of manholes and structures.
- 2. Careful location of manholes and structures.
- 3. Careful location of manholes and structures.
- 4. Careful location of manholes and structures.
- 5. Careful location of manholes and structures.
- 6. Careful location of manholes and structures.
- 7. Careful location of manholes and structures.
- 8. Careful location of manholes and structures.
- 9. Careful location of manholes and structures.
- 10. Careful location of manholes and structures.

1967 11/15/67 11/15/67 THOMAS L. SULLIVAN DATE: 11/15/67 CITY ENGINEER REGISTERED CIVIL ENGINEER NO. 12827	DEPARTMENT OF ENGINEERING CITY OF SAN BERNARDINO STREET IMPROVEMENT PLAN AND PROFILE OF SOUTHWEST CORNER OF 2ND STREET & 1 st STREET	APPROVED DATE DRAWN BY 1967 CHECKED BY SHEET NO. 3607 OF SHEETS	SUBMITTED BY TR. STATE ENG. CO. REFERENCE DRAWING NO.
--	---	--	---